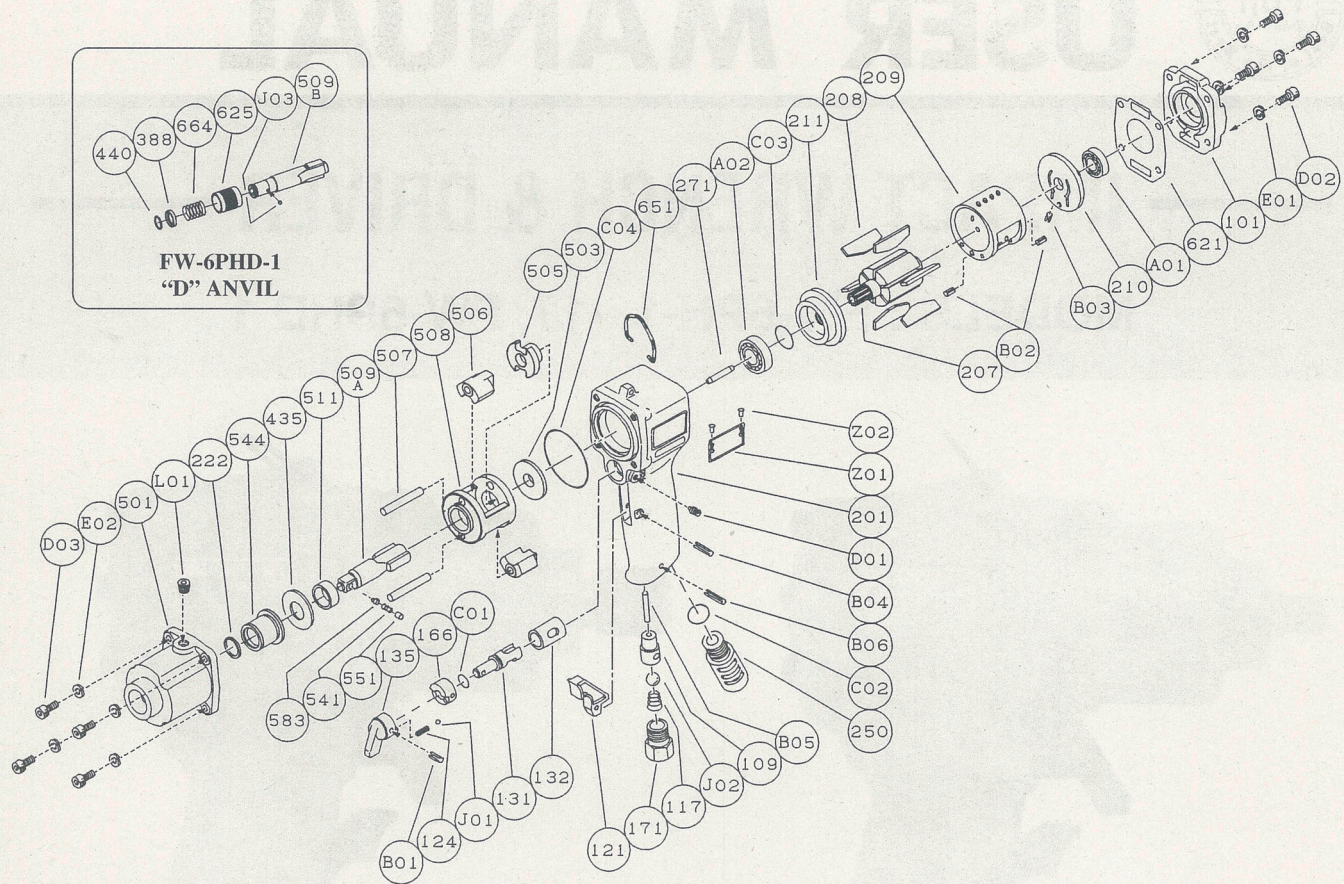


EXPLODED VIEW



FW-6PH-1, -11, FW-6PHD-1

PARTS LIST

Index No.	Parts No.	Parts Name	Qt.	Index No.	Parts No.	Parts Name	Qt.	Index No.	Parts No.	Parts Name	Qt.
FW-6PH-1, -11, FW-6PHD-1											
Ass'y No.	W-252006-53	Housing Ass'y		208	W-027208-00	Rotor Blade	6	E01	SW-5	Spring Washer	4
109	W-252109-00	Throttle Valve	1	209	W-252209-00	Cylinder	1	E02	SW-5	Spring Washer	4
132	W-252132-00	Reverse Valve Bushing	1	(B02)	SP-36	Spring Pin	2	J02	B-3/8	Ball	1
201	W-252201-03	Housing	1	210	W-252210-00	Cylinder Upper Plate	1	Z01	NP-1012	Name Plate	1
Ass'y No. W-252009-01 Reverse Valve Ass'y				(B03)	SP-1.56	Spring Pin	1	Z02	NPN-0X3.2	Screw Rivet	2
124	G-005124-00	Knock Spring	1	211	W-252211-00	Cylinder Lower Plate	1	It is common with FW-6PH-1 excluding the undermentioned parts.			
131	W-252131-00	Reverse Valve	1	250	W-252250-02	Exhaust Cover	1	FW-6PHD-1			
135	W-225135-00	Reverse Valve Lever	1	271	W-252271-00	Rotor Pin	1	388	W-184388-00	Spring Holder	1
166	W-252166-00	Reverse Valve Cover	1	435	W-252435-00	Thrust Washer	1	440	W-184440-00	Ring	1
B01	SP-318	Spring Pin	1	503	W-252503-00	Spacer 	1	509B	W-256509-00	Anvil <D>	1
C01	O-S9	"O" Ring	1	505	W-252505-00	Cam	1	625	W-184625-00	Bit Cover	1
J01	B-3	Ball	1	506	W-252506-00	Hammer Clutch	2	664	W-184664-00	Finder Spring	1
FW-6PH-1, FW-6PHD-1				507	W-252507-00	Clutch Pin	2	J03	B-4	Ball	2
Ass'y No.	W-252013-02	Clutch Housing Ass'y		508	W-252508-00	Clutch Frame	1	Z01	NP-1013	Name Plate	1
222	W-252222-00	Felt Ring	1	509A	W-252509-01	Anvil 	1	FW-6PH-11			
501	W-252501-01	Clutch Housing	1	(541)	W-252541-00	Button Retainer Spring <F>	1	435	W-225435-00	Thrust Washer	1
544	W-252544-00	Clutch Housing Bushing	1	551	W-252551-00	Plug	1	509A	W-252509-04	Anvil 	1
L01	PL-1/8	Plug	1	(583)	W-252583-00	Retainer Button <F>	1	(541)	W-224541-00	Button Retainer Spring <F>	1
FW-6PH-11				511	W-252511-00	Clutch Frame Bushing	1	551	W-224551-00	Plug	1
Ass'y No.	W-252013-03	Clutch Housing Ass'y		621	W-252621-00	Packing <A>	1	(583)	W-224583-00	Retainer Button <F>	1
222	W-252222-01	Felt Ring	1	651	W-225651-00	Hanger	1	511	W-252511-01	Clutch Frame Bushing	1
501	W-252501-01	Clutch Housing	1	A01	BB-6900	Ball Bearing	1	<input type="checkbox"/> Ass'y No. denotes the assembled parts comprising of more than 1pc. of parts. The related parts are shown in the thick frame. <input type="checkbox"/> #209, 210 and 509A are supplied together with parts shown in (). <input type="checkbox"/> Specify parts number and quantity in ordering. Standard Accessory: <FW-6PHD-1> PB-2-3... Phillips No.2 ⊕ 3"(75mm) Driver Bit 1			
544	W-252544-01	Clutch Housing Bushing	1	A02	BB-6001Z	Ball Bearing	1				
L01	PL-1/8	Plug	1	B04	SP-318	Spring Pin	1				
FW-6PH-1, -11, FW-6PHD-1				B05	NR-326FR	Needle Roller	1				
101	W-252101-01	Housing Cover	1	B06	SP-322	Spring Pin	1				
117	W-242117-00	Throttle Valve Spring	1	C02	O-S15	"O" Ring	1				
121	W-252121-00	Throttle Valve Lever	1	C03	O-S12.5	"O" Ring	1				
171	W-242171-00	Inlet Joint <PT>	1	C04	O-S46	"O" Ring	1				
171	W-242171-01	Inlet Joint <NPT>	1	D01	SS-410D	Set Screw	1				
207	W-252207-00	Rotor	1	D02	CS-516	Cap Screw	4				
				D03	CS-516	Cap Screw	4				