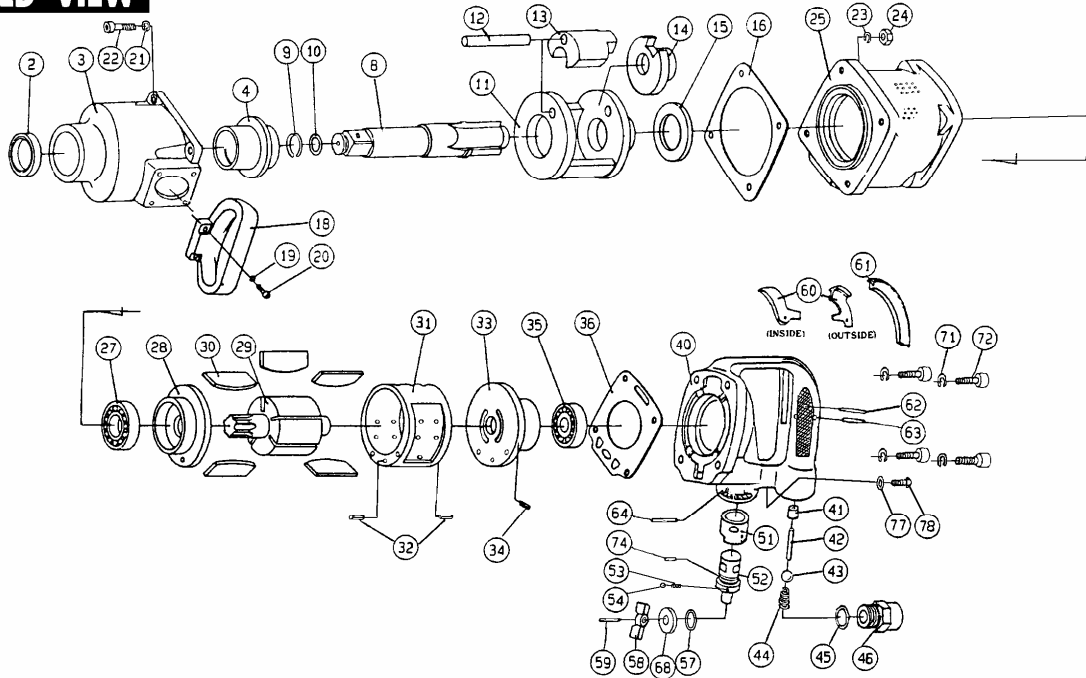


AIXIA-322SA, 322SA-2

IMPACT

EXPLODED VIEW



PARTS LIST

20/01/2005

◆Parts may be changed with or without notice for improvement.

| PART S No. | NAME OF PARTS | PER SET | PARTS CODE | PRICE @ | ORDE R | PART S No. | NAME OF PARTS | PER SET | PARTS CODE | PRICE @ | ORDE R |
|------------|--|---------|------------|---------|--------|------------|--|---------|------------|---------|--------|
| 2 | Oil Seal | 1 | 040525VB | | | 34 | Spring Pin | 1 | 040100SP | | |
| 3A | Hammer Case Assembly (No.2 ~ No.4) | | 2322511 | | | 35 | Ball Bearing | 1 | 06204000 | | |
| 3 | Hammer Case | 1 | 23225370 | | | 36 | Motor Case Packing | 1 | 23225351 | | |
| 4 | Hammer Case Bushing | 1 | 23225420 | | | 40A | Outside Lever Frame Handle Assembly (No.40 ~ No.60, No.62 ~ No.74) | | 2322Q3 | | |
| 8A | Anvil Assembly (No.8 ~ No.10) | | 2322512 | | | 40A | Inside Lever Frame Handle Assembly (No.40 ~ No.74) | | 2322R3 | | |
| 8 | Anvil (8") | 1 | 23225A20 | | | 40 | Frame Handle | 1 | 23265D40 | | |
| 8A | Anvil Assembly (No.8 ~ No.10) | | 2322112 | | | 41 | Throttle Bushing | 1 | 10325422 | | |
| 8 | 2" Anvil (for 322SA-2) | 1 | 23221A20 | | | 42 | Throttle Pin | 1 | 23255280 | | |
| 9 | Retainer Ring | 1 | 23225470 | | | 43 | Throttle Valve | 1 | 002010G | | |
| 10 | O-Ring | 1 | 001400JR | | | 44 | Throttle Spring | 1 | 23215230 | | |
| 11 | Hammer Frame | 1 | 23255D00 | | | 45 | O-Ring | 1 | 002000PR | | |
| 12 | Hammer Pin | 1 | 23225C90 | | | 46 | Inlet Bushing | 1 | 23215422 | | |
| 13 | Hammer | 1 | 23255C70 | | | 51 | Valve Bushing | 1 | 22855420 | | |
| 14 | Driver | 1 | 23225C30 | | | 52 | Adjust Valve | 1 | 22855010 | | |
| 15 | Spacer | 1 | 23225250 | | | 53 | Spring | 1 | 20191230 | | |
| 16 | Hammer Case Packing | 1 | 23225350 | | | 54 | Steel Ball | 1 | 004000S | | |
| 18 | D-Handle | 1 | 10325C10 | | | 57 | O-Ring | 1 | 001600PR | | |
| 19 | Spring Washer (for D-Handle) | 4 | 006000S | | | 58 | Reverse Lever | 1 | 24005E20 | | |
| 20 | Hex.Cap Bolt (for D-Handle) | 4 | 006180CB | | | 59 | Spring Pin | 1 | 000160S | | |
| 21 | Spring Washer | 4 | 006000S | | | 60 | Outside Lever | 1 | 10325180 | | |
| 22 | Hex.Cap Bolt | 4 | 008370CB | | | | Inside Lever | 1 | 23215180 | | |
| 23 | Spring Washer | 4 | 006000S | | | 61 | Rubber (for Inside Lever) | 1 | 23215A90 | | |
| 24 | Hex.Nut (for Motor Case) | 4 | 000000N | | | 62 | Spring Pin | 1 | 040260SP | | |
| 25A | Motor Case Assembly (No.23 ~ No.36) | | 232252 | | | 63 | Needle Pin | 1 | 040198NK | | |
| 25 | Motor Case | 1 | 23225460 | | | 64 | Spring Pin | 1 | 040300SP | | |
| 27 | Ball Bearing | 1 | 06205Z00 | | | 68 | Valve Washer | 1 | 23265510 | | |
| 28 | Front End Plate | 1 | 23225040 | | | 71 | Spring Washer | 4 | 006000S | | |
| 29 | Rotor | 1 | 23225490 | | | 72 | Hex.Cap Bolt | 4 | 008250CB | | |
| 30 | Vane | 5 | 23225500 | | | 74 | Spring Pin | 1 | 000600S | | |
| 31A | Cylinder Assembly (No.31, No.32) | | 2325523 | | | 77 | O-Ring | 1 | 000600PR | | |
| 31 | Cylinder | 1 | 23225190 | | | 78 | Screw | 1 | 00612PMB | | |
| 32 | Spring Pin | 2 | 060180SP | | | | | | | | |
| 33A | Rear End Plate Assembly (No.33, No.34) | | 2325522 | | | | | | | | |
| 33 | Rear End Plate | 1 | 23225050 | | | | | | | | |