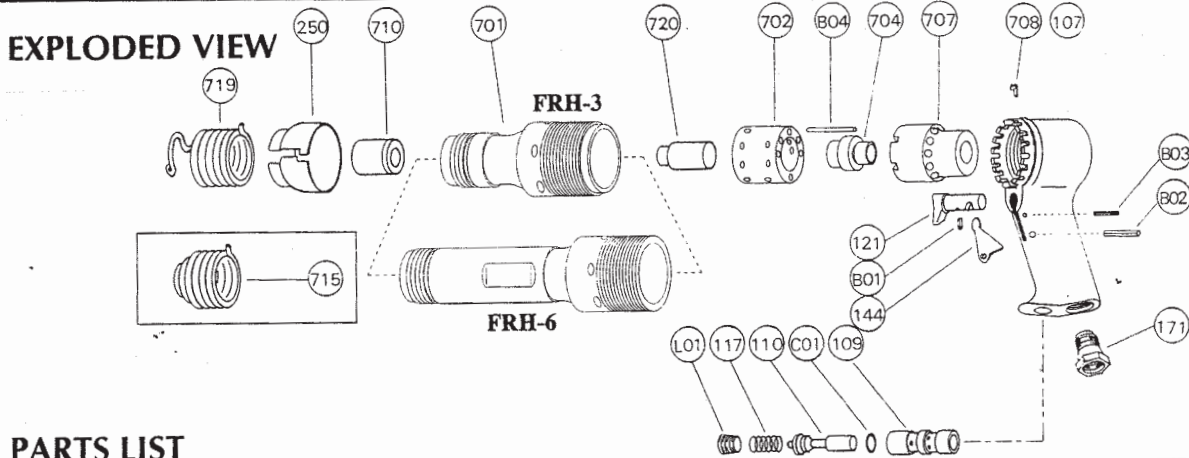


# PARTS LIST MODEL : FRH-3-1,-3-2 FRH-6-1,-6-2



## PARTS LIST

Index No.	Parts No.	Parts Name	Qt.	Index No.	Parts No.	Parts Name	Qt.
<b>FRH-3-1, -2</b>				<b>FRH-6-1, -2</b>			
<b>CP No.</b>	<b>H-019002-00</b>	<b>Handle CP</b>		<b>CP No.</b>	<b>H-019002-00</b>	<b>Handle CP</b>	
107	H-019002-50	Handle	1	107	H-019002-50	Handle	1
(109)	H-019109-00	Throttle Valve Bushing	1	(109)	H-019109-00	Throttle Valve Bushing	1
110	H-019110-00	Throttle Valve	1	110	H-019110-00	Throttle Valve	1
117	H-019117-00	Throttle Valve Spring	1	117	H-019117-00	Throttle Valve Spring	1
121	H-019121-00	Throttle Valve Lever	1	121	H-019121-00	Throttle Valve Lever	1
(B01)	SP-3.56	Spring Pin	1	(B01)	SP-3.56	Spring Pin	1
144	H-019144-00	Throttle Valve Lever (B)	1	144	H-019144-00	Throttle Valve Lever (B)	1
171	W-017171-02	Inlet Joint (PT)	1	171	W-017171-02	Inlet Joint (PT)	1
171	W-017171-01	Inlet Joint (NPT)	1	171	W-017171-01	Inlet Joint (NPT)	1
B02	SP-416	Spring Pin	1	B02	SP-416	Spring Pin	1
B03	SP-315	Spring Pin	1	B03	SP-315	Spring Pin	1
C01	O-P3	"O" Ring	1	C01	O-P3	"O" Ring	1
L01	PL-1/8	Plug	1	L01	PL-1/8	Plug	1
250	H-019250-00	Exhaust Cover	1	250	H-019250-00	Exhaust Cover	1
702	H-020702-00	Valve Box	1	702	H-019702-00	Valve Box	1
704	H-020704-00	Valve	1	704	H-019704-00	Valve	1
707	H-020707-00	Valve Cover	1	707	H-019707-00	Valve Cover	1
708	H-019708-00	Locking Clutch	1	708	H-019708-00	Locking Clutch	1
719	H-019719-00	Holder Spring	1	719	H-019719-00	Holder Spring	1
720	H-020720-00	Piston	1	720	H-019720-00	Piston	1
B04	NR-332	Needle Roller	1	B04	NR-332	Needle Roller	1
<b>FRH-3-1</b>				<b>FRH-6-1</b>			
<b>CP No.</b>	<b>H-020007-01</b>	<b>Cylinder CP</b>		<b>CP No.</b>	<b>H-019007-01</b>	<b>Cylinder CP</b>	
701	H-020701-00	Cylinder	1	701	H-019701-00	Cylinder	1
710	H-019710-H	Chisel Bushing	1	710	H-019710-H	Chisel Bushing	1
<b>FRH-3-2</b>				<b>FRH-6-2</b>			
<b>CP No.</b>	<b>H-020007-02</b>	<b>Cylinder CP</b>		<b>CP No.</b>	<b>H-019007-02</b>	<b>Cylinder CP</b>	
701	H-020701-00	Cylinder	1	701	H-019701-00	Cylinder	1
710	H-019710-00	Chisel Bushing	1	710	H-019710-00	Chisel Bushing	1

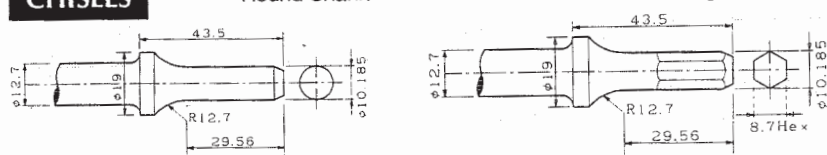
- CP No. denotes the assembled parts comprising of more than 1 pc. of parts. The related parts are shown in the thick frame.
  - # 107 and 121 are supplied together with parts shown in ( ).
  - Specify parts number and quantity in ordering.
- Standard Accessory :  
 H-019715-00.....Holder Spring 1.

### OPTIONAL PARTS

#### CHISELS

Round Shank

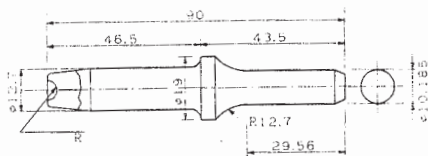
Hexagonal Shank



Index No.	Round	Hexagonal	Part Name	
	AC No.	AC No.		
808	WA-808	WA-808H	Maffier Spitter	
809	WA-809	WA-809H	Panel Cutter	
810	WA-810	WA-810H	Cold Chisel	
812	WA-812	WA-812H	Punch	
813	WA-813	WA-813H	Rivet Cutter	
814	WA-814	WA-814H	Straight Punch	
815	WA-815	WA-815H	Spot Weld Breaker	

#### RIVET SNAPS

FRH-3, FRH-6



AC No.	Size (R)		Rivet Size	
	mm	in	mm	in
SNAP-3	3.0	1/8	3	1/8
SNAP-4	3.7	9/64	4	5/32
SNAP-5	4.8	3/16	5	3/16
SNAP-6	5.1	13/64	6	1/4