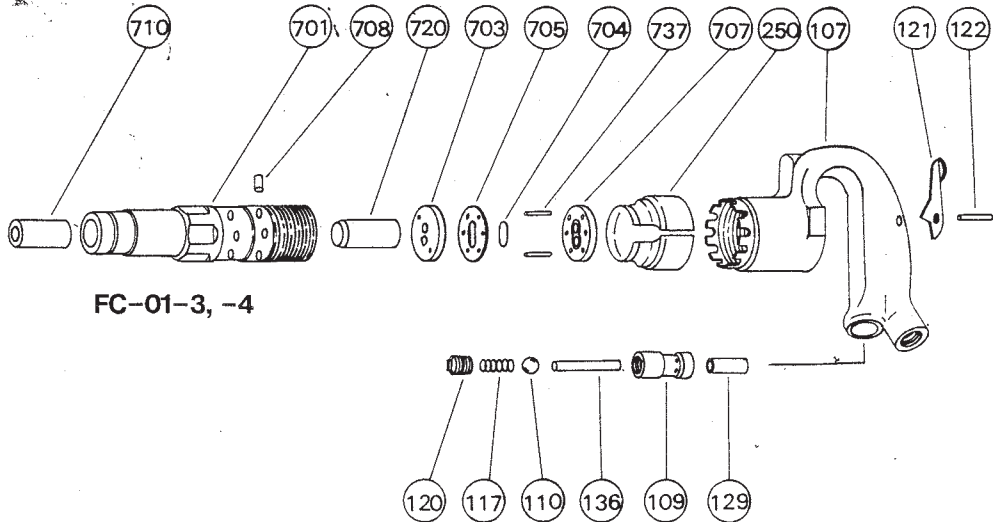
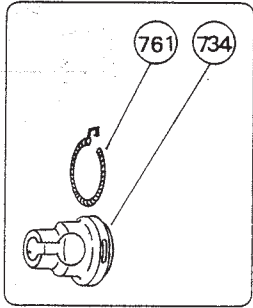


EXPLODED VIEW

OPTION



PART LIST : FC-01-3, -4

Index No.	Part No.		Part Name
	FC-01-3	FC-01-4	
CP No.	H-004002-00	○	Handle: CP
107	H-004107-00	○	Handle
109	H-004109-00	○	Throttle Valve Bushing
110	B-5/16U	○	Urethan Ball
117	H-004117-A	○	Throttle Valve Spring
120	H-004120-00	○	Throttle Valve Cover
121	H-004121-00	○	Throttle Valve Lever
122	NR-316	○	Needle Roller
129	H-004129-00	○	Throttle Valve Rod Bushing
136	NR-555	○	Needle Roller
CP No.	H-061007-01	H-061007-02	Cylinder: CP
701	H-061701-00	H-061701-01	Cylinder

Index No.	Part No.		Part Name
	FC-01-3	FC-01-4	
710	H-004710-H	H-004710-00	Chisel Bushing
250	H-004250-00	○	Exhaust Cover
703	H-004703-00	○	Valve Sheet
704	H-004704-00	○	Valve
705	H-004705-00	○	Valve Case
707	H-004707-00	○	Valve Cover
708	R-003708-A	○	Locking Clutch
720	H-004720-00	○	Piston
737	P-2.818	○	Pin (2)
OPTIONAL PART			
714	H-059714-00	○	Chisel Holder
761	H-059761-00	○	Retainer Spring

- The letters CP in the index No. column represent assembled parts. The parts which form CP are shown in the thick square line and their part Nos. are indented by two letters.
- The parenthesized part is supplied together when the part which is shown above the parenthesized part is ordered. The parenthesized part is available separately when it is ordered.
- The parenthesized figure in the Part Name column shows the number of required quantity.
- Mark ○ in the Part No. Column shows that the same part shown in the left column is used.

COMPRESSOR, PIPING & AIR LINE SYSTEM

