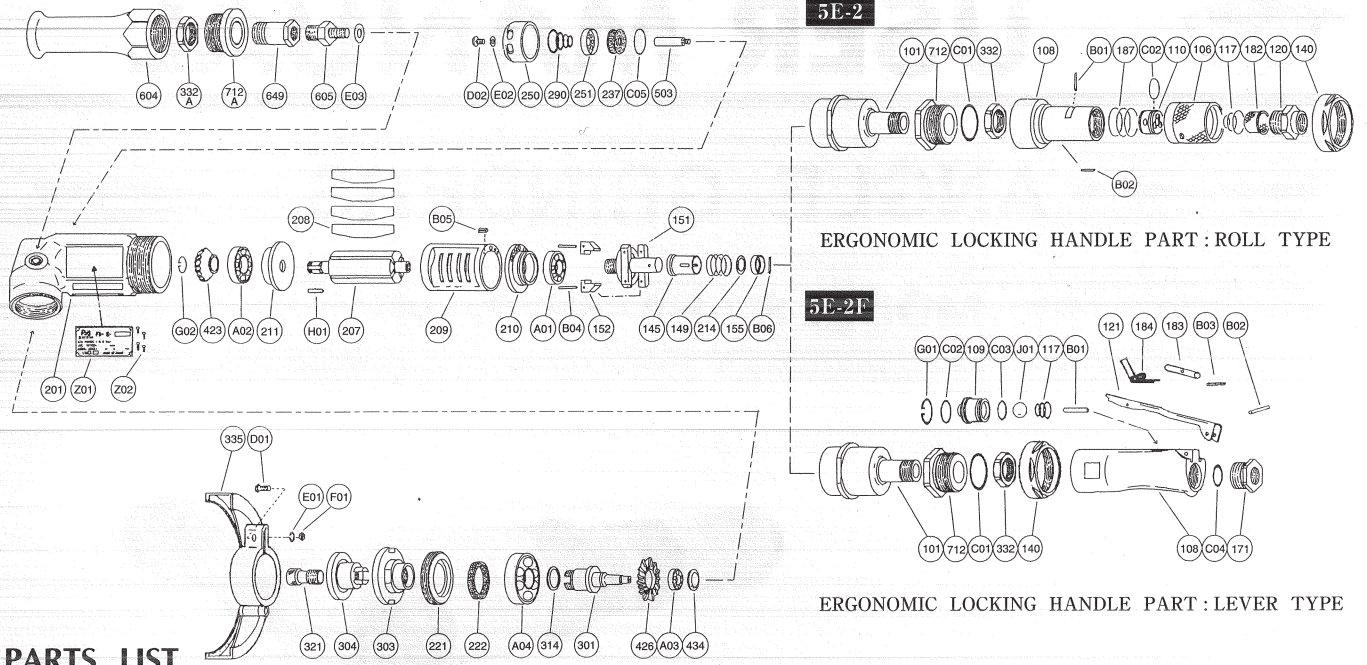


PARTS LIST MODEL: FA-5E-2, -2F

EXPLODED VIEW



PARTS LIST

Index No.	Parts No.	Parts Name	Qt.	Index No.	Parts No.	Parts Name	Qt.	Index No.	Parts No.	Parts Name	Qt.
FA-5E-2											
LOCKING ROLL HANDLE TYPE											
CP No.	A-192001-00	Housing Cover CP		C02	O-S16	" O " Ring	1	222	A-006222-00	Felt Ring	1
101	A-192101-00	Housing Cover	1	C03	O-S14	" O " Ring	1	237	A-192237-00	Muffler Pad	2
332	A-192332-00	Lock Nut	1	C04	O-P20	" O " Ring	1	250	A-192250-01	Exhaust Cover	1
712	A-192712-00	Damper	1	G01	SR-R20	Snap Ring	1	251	A-192251-00	Exhaust Valve	1
C01	O-S29	" O " Ring	1	J01	B-9/16U	Urethan Ball	1	290	A-192290-00	Muffler Spring	1
CP No.	A-192003-00	Throttle Valve Body CP		CP No. A-192019-00 Lock Lever CP				301	A-192301-00	Wheel Spindle	1
106	A-086106-00	Throttle Valve Handle	1	121	A-192121-00	Throttle Valve Lever	1	303	A-192303-00	Wheel Flange <A>	1
108	A-192108-00	Throttle Valve Body	1	183	G-144183-02	Lock Key	1	304	A-192304-01	Wheel Flange 	1
110	A-086110-00	Throttle Valve	1	184	G-144184-00	Lock Spring	1	314	A-006314-00	Wheel Spindle Washer (T=0.2)	1
117	A-086117-00	Throttle Valve Spring	1	B03	SP-218	Spring Pin	1	314	A-006314-01	Wheel Spindle Washer (T=0.3)	1
120	A-086120-00	Throttle Valve Cover (PT)	1	CP No. A-107010-00 Governor Weight Cp				314	A-006314-02	Wheel Spindle Washer (T=0.5)	1
120	A-086120-01	Throttle Valve Cover (NPT)	1	151	A-107151-01	Governor Cage	1	321	A-066321-00	Detent Bolt	1
182	A-086182-00	Strainer	1	152	A-010152-00	Governor Weight	2	335	A-192335-00	Wheel Guard	1
187	A-086187-00	Throttle Valve Handle Spring	1	B04	GP-2.516GCH	Grooved Pin	2	(D01)	HS-625	Hexagon Bolt	1
B01	NR-415	Needle Roller	1	CP No. A-192014-00 Dead Handle CP				(E01)	SW-6	Spring Washer	1
B02	NR-413	Needle Roller	1	604	A-192604-00	Dead Handle	1	(F01)	N-6	Nut	1
C02	O-S20	" O " Ring	1	CP No. A-192039-00 Damper CP				423	A-192423-00	Bevel Pinion	1
FA-5E-2F				332A	A-192332-00	Lock Nut	1	426	A-192426-00	Bevel Gear	1
LOCKING LEVER HANDLE TYPE				649	A-192649-00	Joint	1	434	A-099434-00	Bearing Washer	1
CP No.	A-192001-01	Housing Cover CP		712A	A-192712-01	Damper	1	503	A-192503-00	Spacer 	1
101	A-192101-00	Housing Cover	1	140	A-154140-00	Cup Nut (FA-5E-2)	1	605	A-107605-00	Dead Handle Joint	1
140	A-154140-00	Cup Nut	1	145	A-065145-00	Governor Valve	1	A01	BB-609MN	Ball Bearing	1
332	A-192332-00	Lock Nut	1	149	A-093149-03	Governor Valve Spring	1	A02	BB-6000MN	Ball Bearing	1
712	A-192712-00	Damper	1	155	A-065155-00	Governor Valve Spring Holder	1	A03	BB-606	Ball Bearing	1
C01	O-S29	" O " Ring	1	201	A-192201-00	Housing	1	A04	BB-6003ZZ	Ball Bearing	1
CP No.	A-192003-01	Throttle Valve Body CP		207	A-192207-00	Rotor	1	B06	NR-211.8	Needle Roller	1
108	A-192108-01	Throttle Valve Body	1	208	A-152208-00	Rotor Blade	4	C05	O-S30	" O " Ring	1
109	A-192109-00	Throttle Valve Bushing	1	209	A-152209-00	Cylinder	1	D02	CS-58B	Cap Screw	1
117	A-192117-00	Throttle Valve Spring	1	(B05)	SP-2.56	Spring Pin	1	E02	PW-5	Plain Washer	1
171	A-192171-00	Inlet Joint (PT)	1	210	A-192210-00	Cylinder Upper Plate	1	E03	PW-8	Plain Washer	1
171	A-192171-01	Inlet Joint (NPT)	1	211	A-152211-01	Cylinder Lower Plate	1	G02	SR-G9	Snap Ring	1
B01	NR-423FR	Needle Roller	1	214	A-065214-00	Adjusting Washer (T=0.2)	1	H01	K-338F	Key	1
B02	SP-320	Spring Pin	1	214	A-065214-01	Adjusting Washer (T=0.3)	1	Z01	NP-0110	Name Plate	1
				214	A-065214-02	Adjusting Washer (T=0.5)	1	Z02	NPN-0x3.2	Screw Rivet	4
				221	A-192221-00	Spindle Bearing Cover	1				

□ CP No. denotes the assembled parts comprising of more than 1 pc. of parts.

The related parts are shown in the thick frame.

□ #209 and 335 are supplied together with parts shown in ().

□ Specify parts number and quantity in ordering.

■ Standard Accessories : F-706 6mm Hex. Pin Wrench 1.

F-110 26mm Open-End Wrench 1.